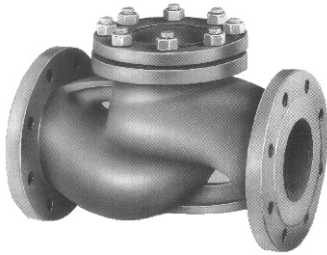


# CHECK VALVES

## Cast iron NP 16

### Art. 085.0287 Straight

### Art. 085.0288 Angle



Art. 085.0287

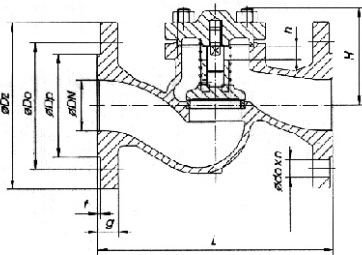
**Execution:** cast iron body and bonnet GG 25 - stainless steel stem X20Cr13 - stainless steel disc X20Cr13 (ND 15÷50) X20Cr14 (ND 65÷200) - seal between body and bonnet Klinger SIL C 4400 - stainless steel seal rings X10Cr13 - drilled and dimensioned flanges according to DIN 2501 normatives NP 16 - volume according to DIN 3202 normatives F1 series (Art.287) and F32 (Art. 288) - construction and technical characteristics according to DIN 3230 normatives.

#### Diameters: ND 15 ÷ ND 250

Max pressure 16 bar

Max temperature 300°C

**Employments:** hot and cold water - steam - non-aggressive fluids for temperatures until 300°C - Minimum opening pressure of spring valve 0.05 - 0.1 bar.

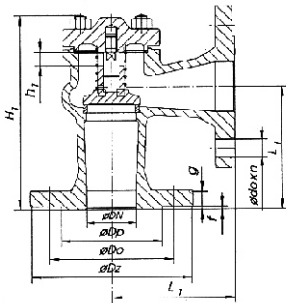


Sec.Art. 085.0287

#### Working pressure

| Nominal pressure (NP) | Body pressure test (bar) | Test pressure of seal seats (bar) | Working pressure (bar) |       |       |       |
|-----------------------|--------------------------|-----------------------------------|------------------------|-------|-------|-------|
|                       |                          |                                   | 150°C                  | 200°C | 250°C | 300°C |
| 16                    | 24                       | 16                                | 16                     | 13.6  | 11.2  | 8.8   |

#### Sizes



Sec.Art. 085.0288

| ND  | Dz  | Art. 085.0287 - 085.0288 |     |    |    |    |   |                  | Art. 085.0287 |     | Art. 085.0288 |                |                |      |
|-----|-----|--------------------------|-----|----|----|----|---|------------------|---------------|-----|---------------|----------------|----------------|------|
|     |     | Dp                       | Do  | do | n  | g  | f | h/h <sub>1</sub> | H             | L   | Kg            | H <sub>1</sub> | L <sub>1</sub> | Kg   |
| 15  | 95  | 45                       | 65  | 14 | 4  | 14 | 2 | 5                | 56            | 130 | 2.1           | 140            | 90             | 2.2  |
| 20  | 105 | 58                       | 75  | 14 | 4  | 16 | 2 | 5                | 56            | 150 | 2.7           | 142            | 95             | 2.8  |
| 25  | 115 | 68                       | 85  | 14 | 4  | 16 | 2 | 8                | 67            | 160 | 3.8           | 157            | 100            | 3.9  |
| 32  | 140 | 78                       | 100 | 18 | 4  | 18 | 2 | 8                | 76            | 180 | 5.5           | 165            | 105            | 5.5  |
| 40  | 150 | 88                       | 110 | 18 | 4  | 18 | 3 | 11               | 89            | 200 | 7.4           | 185            | 115            | 7.0  |
| 50  | 165 | 102                      | 125 | 18 | 4  | 20 | 3 | 14               | 96            | 230 | 9.5           | 198            | 125            | 9.2  |
| 65  | 185 | 122                      | 145 | 18 | 4  | 20 | 3 | 17               | 104           | 290 | 15            | 224            | 145            | 12.2 |
| 80  | 200 | 138                      | 160 | 18 | 8  | 22 | 3 | 21               | 124           | 310 | 20            | 237            | 155            | 17.2 |
| 100 | 220 | 158                      | 180 | 18 | 8  | 24 | 3 | 25               | 161           | 350 | 29            | 292            | 175            | 25   |
| 125 | 250 | 188                      | 210 | 18 | 8  | 26 | 3 | 32               | 174           | 400 | 41            | 329            | 200            | 36   |
| 150 | 285 | 212                      | 240 | 22 | 8  | 26 | 3 | 38               | 197           | 480 | 58            | 363            | 225            | 55   |
| 200 | 340 | 268                      | 295 | 22 | 12 | 30 | 3 | 50               | 248           | 600 | 110           | 452            | 275            | 97   |
| 250 | 405 | 320                      | 355 | 26 | 12 | 32 | 3 | 65               | 333           | 730 | 190           | 535            | 325            | -    |

