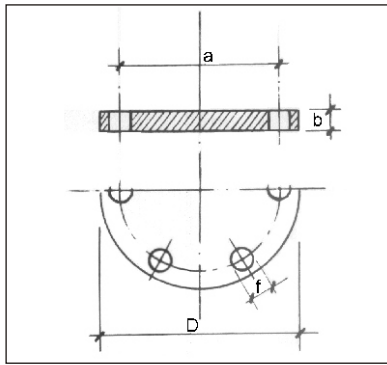


FLANGES

BLANK FLANGES NP 6 NP 10 AND NP 16



Art. 008.6091 NP 6 UNI 6091/67

Art. 008.6092 NP 10 UNI 6092/67

Art. 008.6093 NP 16 UNI 6093/67

Execution: ASTMA105 steel - completely turned - drilled as table
- phonometric lined sealing surface.

Diameter: ND 10 ÷ ND 500

On request: FE 410 execution.

Dimensions and weights

ND	UNI 6091/67 NP 6						UNI 6092/67 NP 10						UNI 6093/67 NP 16					
	Diam. D	C.line a	Thick. b	Holes n°	Diam. f	Appr. weight Kg.	Diam. D	C.line a	Thick. b	Holes n°	Diam. f	Appr. weight Kg.	Diam. D	C.line a	Thick. b	Holes n°	Diam. f	Appr. weight Kg.
10	75	50	12	4	11	0.380	90	60	14	4	14	0.630	90	60	14	4	14	0.630
15	80	55	12	4	11	0.440	95	65	14	4	14	0.710	95	65	14	4	14	0.710
20	90	65	14	4	11	0.650	105	75	16	4	14	1.010	105	75	16	4	14	1.010
25	100	75	14	4	11	0.820	115	85	16	4	14	1.220	115	85	16	4	14	1.220
32	120	90	14	4	14	1.170	140	100	16	4	18	1.800	140	100	16	4	18	1.800
40	130	100	14	4	14	1.390	150	110	16	4	18	2.090	150	110	16	4	18	2.090
50	140	110	14	4	14	1.620	165	125	18	4	18	2.870	165	125	18	4	18	2.870
65	160	130	14	4	14	2.140	185	145	18	4	18	3.650	185	145	18	4	18	3.650
80	190	150	16	4	18	3.430	200	160	20	4	18	4.610	200	160	20	4	18	4.610
100	210	170	16	4*	18	4.220	220	180	20	8	18	5.650	220	180	20	8	18	5.650
125	240	200	18	8	18	6.110	250	210	22	8	18	8.120	250	210	22	8	18	8.120
150	265	225	18	8	18	7.510	285	240	22	8	22	10.500	285	240	22	8	22	10.500
175	295	255	20	8	18	10.200	315	270	24	8	22	14.100	315	270	24	8	22	14.100
200	320	280	20	8	18	12.300	340	295	24	8	22	16.500	340	295	24	12	22	16.200
250	375	335	22	12	18	18.500	395	350	26	12	22	24.100	405	355	26	12	25	25.100
300	440	395	22	12	22	25.500	445	400	26	12	22	30.800	460	410	28	12	25	35.200
350	490	445	22	12	22	31.800	505	460	26	16	22	39.600	520	470	30	16	25	48.200
400	540	495	22	16	22	38.500	565	515	26	16	25	49.600	580	525	32	16	30	63.500
450	595	550	22	16	22	47.-	615	565	26	20	25	58.600	640	585	32	20	30	77.200
500	645	600	24	20	22	60.400	670	620	28	20	25	75.300	715	650	34	20	33	102.-

*For oil conveying pipes, flange must have 8 holes.

