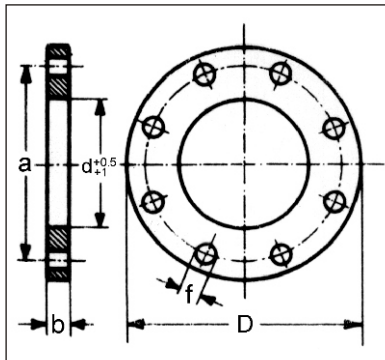


FLANGES

PLATE FLANGES NP 16 UNI 2278/67

Art. 008.2278



Execution: ASTM A105 steel - inside and on the contact surface turned - drilled as table - phonometric lines - overlap welding.

Diameters: ND 10 ÷ ND 1000

On request: raised face according to UNI 2229 - outside turned - FE 410 construction.

Dimensions and weights

ND	FLANGE			DRILLING				Approx. weight Kg.
	Outside diameter D	Inside diameter d DIN	ISO	Thickness b	Holes n°	Diameter f	Center line a	
10	90	14	18	12	4	14	60	0.520
15	95	21	22	12	4	14	65	0.660
20	105	26	28	14	4	14	75	0.820
25	115	31	34	14	4	14	85	1.010
32	140	39	43	16	4	18	100	1.630
40	150	45	49	16	4	18	110	1.850
50	165	58	62	18	4	18	125	2.460
65	185	77	77	18	4	18	145	3.-
80	200	90	90	20	8	18	160	3.610
100	220	109	116	22	8	18	180	4.400
125	250	135	141	24	8	18	210	5.920
150	285	161	170	24	8	22	240	7.170
175	315	196	196	26	8	22	270	9.200
200	340	221	221	26	12	22	295	10.100
250	405	269	275	32	12	25	355	16.-
300	460	326	326	32	12	25	410	19.500
350	520	371	358	36	16	25	470	30.-
400	580	422	409	38	16	30	525	36.500
450	640	460	460	40	20	30	585	42.-
500	715	511	511	42	20	33	650	51.-
600	840	612	612	44	20	36	770	70.-
700	910	714	714	46	24	36	840	88.-
800	1025	816	816	48	24	39	950	115.-
900	1125	917	917	50	28	39	1050	125.-
1000	1255	1020	1020	50	28	42	1170	160.-

