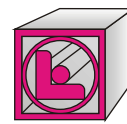
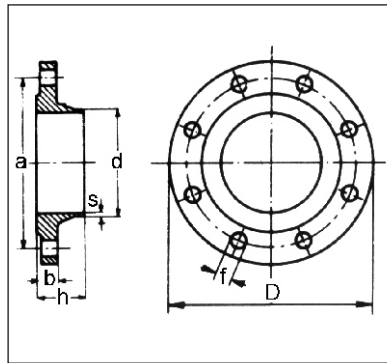


FLANGES



G.OGRINC
katalog strojne
instalacije

WELDING NECK FLANGES NP 64 AND NP 100



Art. 008.2285 NP 64 UNI 2285/67

Art. 008.2286 NP 100 UNI 2286/67

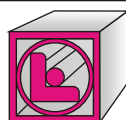
Execution: ASTMA105 steel - inside and on welding relief turned - drilled as table - sealing raised surface according to UNI 2229 - butt welding.

Diameters: ND 10 ÷ ND 400

On request: outside turned.

Dimensions and weights

ND	FLANGE			DRILLING					Approx. weight Kg.	
	Outside diameter D	Inside diam. d DIN ISO	Thickness b	Thickness s	Height h	Holes n°	Diameter f	Center line a		
UNI 2285/67 NP 64										
FROM ND 10 TO ND 40 USE FLANGES NP 100 UNI 2286/67										
50	180	58 62	26	3.5	62	4	22	135	4.450	
65	205	77 77	26	3.5	68	8	22	160	5.500	
80	215	90 90	28	3.7	72	8	22	170	6.430	
100	250	109 116	30	4	78	8	25	200	9.050	
125	295	135 141	34	5	88	8	30	240	14.200	
150	345	161 170	36	6	95	8	33	280	20.800	
175	375	196 196	40	6.5	105	12	33	310	28.-	
200	415	221 221	42	7.3	110	12	36	345	33.200	
250	470	269 275	46	8	125	12	36	400	46.-	
300	530	326 326	52	9.8	140	16	36	460	63.900	
350	600	371 358	56	11	150	16	39	525	93.-	
400	670	422 409	60	12	160	16	42	585	122.-	
UNI 2286/67 NP 100										
10	100	14 18	20	2.3	45	4	14	70	1.080	
15	105	21 22	20	2.5	45	4	14	75	1.200	
20	130	26 28	22	2.8	52	4	18	90	2.020	
25	140	31 34	24	2.8	58	4	18	100	2.600	
32	155	39 43	24	3	60	4	22	110	3.120	
40	170	45 49	26	3.5	62	4	22	125	4.-	
50	195	58 62	28	4	68	4	25	145	5.800	
65	220	77 77	30	4.5	76	8	25	170	7.570	
80	230	90 90	32	5	78	8	25	180	8.720	
100	265	109 116	36	6	90	8	30	210	12.900	
125	315	135 141	40	6.8	105	8	33	250	20.700	
150	355	161 170	44	7	115	12	33	290	27.400	
175	385	196 196	48	9	127	12	33	320	40.-	
200	430	221 221	52	9.8	130	12	36	360	48.700	
250	505	269 275	60	12	157	12	39	430	78.800	
300	585	326 326	68	13.5	170	16	42	500	114.-	
350	655	371 358	74	15.2	189	16	48	560	163.-	
400	715	422 409	80	18	200	16	48	620	220.-	



G.OGRINC d.o.o.

Tel.01 361 50 44, Fax.01 361 16 00, e-pošta.gogrinc@siol.net, splet.www.g-ogrinc.si

VA PO RU SA

E 1.1.10