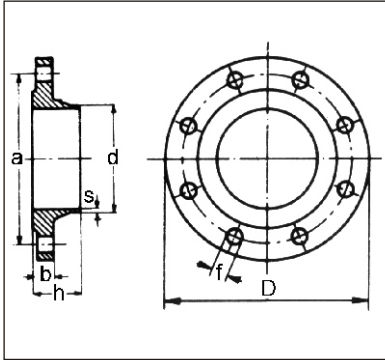


FLANGES

WELDING NECK FLANGES NP 16 UNI 2282/67

Art. 008.2282



Execution: ASTMA105 steel - inside and on welding relief turned - drilled as table - sealing raised surface according to UNI 2229 - butt welding.

Diameters: ND 10 ÷ ND 2000

On request: outside turned.

Dimensions and weights

ND	FLANGE			DRILLING				Approx. weight Kg.	
	Outside diameter D	Inside diam. d DIN ISO	Thickness b	Thickness s	Height h	Holes n°	Diameter f		Center line a
10	90	14 18	14	2.3	35	4	14	60	0.650
15	95	21 22	14	2.5	35	4	14	65	0.730
20	105	26 28	16	2.5	38	4	14	75	1.030
25	115	31 34	16	2.8	38	4	14	85	1.230
32	140	39 43	16	3	40	4	18	100	1.800
40	150	45 49	16	3	42	4	18	110	2.080
50	165	58 62	18	3.5	45	4	18	125	2.780
65	185	77 77	18	3.5	45	4	18	145	3.400
80	200	90 90	20	3.7	50	8	18	160	4.200
100	220	109 116	20	3.7	52	8	18	180	4.750
125	250	135 141	22	4	55	8	18	210	6.450
150	285	161 170	22	5	55	8	22	240	8.-
175	315	196 196	24	5	60	8	22	270	10.500
200	340	221 221	24	5	62	12	22	295	11.400
250	405	269 275	26	5.5	70	12	25	355	16.300
300	460	326 326	28	6	78	12	25	410	21.800
350	520	371 358	30	6.4	82	16	25	470	31.700
400	580	422 409	32	7	85	16	30	525	38.300
450	640	460 460	32	7.3	85	20	30	585	45.500
500	715	511 511	34	7.3	90	20	33	650	61.100
600	840	612 612	36	7.3	95	20	36	770	84.600
700	910	714 714	36	9	100	24	36	840	87.400
800	1025	816 816	38	9	105	24	39	950	109.-
900	1125	917 917	40	10	110	28	39	1050	129.-
1000	1255	1020 1020	42	12	120	28	42	1170	175.-
1200	1485	1224 1224	48	14	130	32	48	1390	257.-
1400	1685	1424 1424	52	16	145	36	48	1590	337.-
1600	1930	1624 1624	58	17	160	40	56	1820	481.-
1800	2130	1824 1824	62	19	170	44	56	2020	591.-
2000	2345	2024 2024	66	21	180	48	62	22300	727.-

VA PO RU SA

