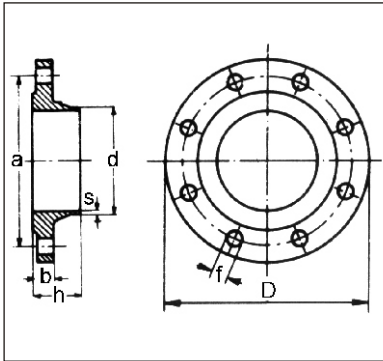


## WELDING NECK FLANGES NP 10 UNI 2281/67

**Art. 008.2281**



**Execution:** ASTMA105 steel - inside and on welding relief turned - drilled as table - sealing raised surface according to UNI 2229 - butt welding.

**Diameters:** ND 10 ÷ ND 2000

**On request:** outside turned.

### Dimensions and weights

ND	FLANGE			DRILLING						Approx. weight Kg.
	Outside diameter D	Inside diam. d DIN ISO	Thickness b	Thickness s	Height h	Holes n°	Diameter f	Center line a		
10	90	14 18	14	2.3	35	4	14	60	0.650	
15	95	21 22	14	2.5	35	4	14	65	0.730	
20	105	26 28	16	2.5	38	4	14	75	1.030	
25	115	31 34	16	2.8	38	4	14	85	1.230	
32	140	39 43	16	3	40	4	18	100	1.800	
40	150	45 49	16	3	42	4	18	110	2.080	
50	165	58 62	18	3.5	45	4	18	125	2.780	
65	185	77 77	18	3.5	45	4	18	145	3.400	
80	200	90 90	20	3.7	50	4	18	160	4.200	
100	220	109 116	20	3.7	52	8	18	180	4.750	
125	250	135 141	22	4	55	8	18	210	6.450	
150	285	161 170	22	5	55	8	22	240	8.-	
175	315	196 196	24	5	60	8	22	270	10.500	
200	340	221 221	24	5	62	8	22	295	11.400	
250	395	269 275	26	5.5	68	12	22	350	15.200	
300	445	326 326	26	6	68	12	22	400	18.-	
350	505	371 358	26	6.4	68	16	22	460	24.500	
400	565	422 409	26	7	72	16	25	515	30.200	
450	615	460 460	26	7.3	72	20	25	565	32.300	
500	670	511 511	28	7.3	75	20	25	620	40.500	
600	780	612 612	28	7.3	80	20	30	725	50.-	
700	895	714 714	30	9	80	24	30	840	66.500	
800	1015	816 816	32	9	90	24	33	950	90.-	
900	1115	917 917	34	9	95	28	33	1050	104.-	
1000	1230	1020 1020	34	9	95	28	36	1160	121.-	
1200	1455	1224 1224	38	10	115	32	39	1380	180.-	
1400	1675	1424 1424	42	11	120	36	42	1590	248.-	
1600	1915	1624 1624	46	12	130	40	48	1820	352.-	
1800	2115	1824 1824	50	13	140	44	48	2020	433.-	
2000	2325	2024 2024	54	14	150	48	48	2230	543.-	