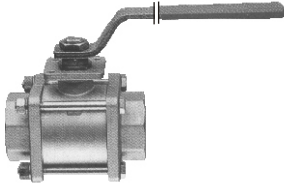


# THREADED BALL VALVE

**Stainless steel full bore AISI 316 3PCS NP 16/64**

**Art. 037.7160**



Art. 037.7160

**Execution:** 3 pieces construction -stainless steel body, sleeve, ball and pivot AISI 316 - PTFE gasket, ball gasket, pivot washer and pivot gasket - viton O-Ring - PVC covered steel lever - full bore valve - female threaded ends ISO 7/1 - connection ISO 5211 for pneumatic actuator.

**Diameters:** 1/4" ÷ 4"

Working pressure see graphic

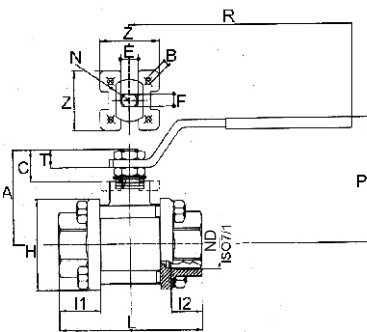
Working temperature -20°C +160°C

**Employments:** industrial plants.

**On request:** particular seals- butt welding or socket welding ends - installation of pneumatic actuator simple or double effect (see chapter "L") - electric motorization.

## Sizes

Ř	I1	I2	L	H	R	P	A	E	F	Z	KV	NP
1/4"	18	11	57	33	110.5	50	35	8	5	-	5.4	64
3/8"	18	11.4	57	33	110.5	50	35	8	5	-	6	64
1/2"	20.5	15	65	38	131.5	64	47	10	7	36	16.3	64
3/4"	22.5	16.3	76	46.5	131.5	68	51.5	10	7	42	29.5	40
1"	27	19.1	92	58	174.5	78	60	12	8	42	43	40
1L"	30	21.4	106.5	66.5	174.5	83	64.5	12	8	42	89	25
1"	31	21.4	116	76	250.5	100	78	16	10	50	230	25
2"	36	25.7	136	90	250.5	107	85	16	10	50	265	25
2"	38.5	30.2	153.5	134	321.5	126.5	103	20	14	64	540	16
3"	43	33.3	180	161	321.5	137.5	114	20	14	64	573	16
4"	50	39.3	217	190	381.5	156.5	137	24	18	92	1390	16



Sec.Art. 037.7160

## Chart

