

THERMOMETERS

Brass sheath bimetal thermometer

Art. 004.0500 Radial connection

Art. 004.0501 Back connection

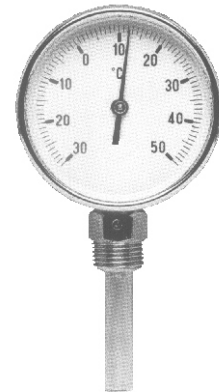
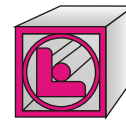
Execution: steel case and cap - tempered glass - white aluminium dial with black scale - oxidized black steel pointer - nickel brass shank - extractable sheath in whitened brass with external diameter 13mm and internal 10mm - thread gas connection 1/2". It receives variations in temperature exploiting the expansion of a bimetal coil to whose end is placed the indication pointer.

Diameters: Case 60/80/100/125/150/200 mm
Temperature range -30°C +500°C

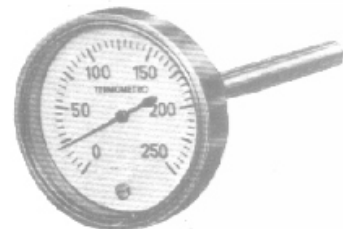
Sheath length: from 40 to 600 mm

Employments: thermowater plants - oil - food - pharmaceutical.

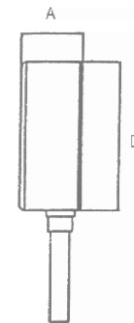
On request: completely stainless steel - stainless steel shank - sheath thread NPT - flange for board installation.



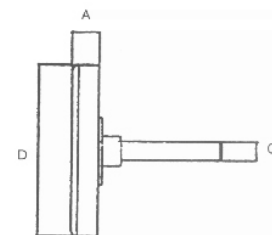
Art. 004.0500



Art. 004.0501



Sec.Art. 004.0500



Sec.Art. 004.0501

Sizes

Ø	Art. 004.0500			Art. 004.0501		
	A	D	C	A	D	C
60	12	60	9	30	60	9
80	13.5	81	9	36.5	81	9
100	15	99	9	39	99	9
125	20	141	9	50	141	9
150	22	167	9	50	167	9

