

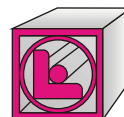
ELBOW

ISO stainless steel welding elbow

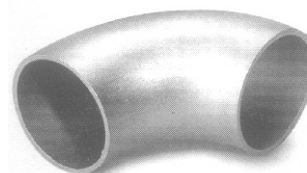
Art. 009.0620

Execution: cold producing from 304 stainless steel pipes - 2 mm thickness - electrically connected - 90° angle - execution according to UNI/ISO 3419-DIN 2605 normatives.

On request: execution in 2,5 and 3 mm thickness - AISI 316L construction - test certifications according to EN normatives.



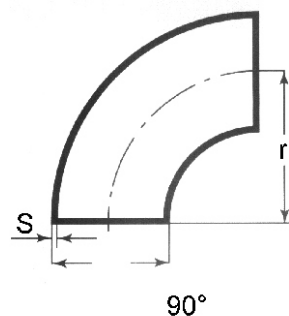
G.OGRINC
katalog strojne
instalacije



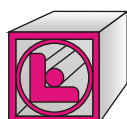
Art. 009.0620

Dimensions

Ø	Thickness mm	r mm	Tolerances mm	Weight Kg
17.2	2	25.8	±2.5	---
21.3	2	38.0	±2.5	0.06
26.9	2	39.0	±2.5	0.06
33.7	2	38.0	±2.5	0.10
42.4	2	47.6	±2.5	0.12
48.3	2	57.1	±3	0.21
60.3	2	76.2	±3	0.35
76.1	2	96.0	±3	0.56
88.9	2	114.5	±3	0.78
101.6	2	133.5	±3	0.84
104.0	2	150.0	±3	1.45
114.3	2	152.5	±3	1.35
139.7	2	190.5	±4	2.06
168.3	2	228.5	±4	2.99
219.1	2	305.0	±4	5.20
273	2	381.0	±4	10.23
323.9	2	457.2	±4	14.44



Sec.Art. 009.0620



G.OGRINC d.o.o.

Tel.01 361 50 44,Fax.01 361 16 00,e-pošta.gogrinc@siol.net,splet.www.g-ogrinc.si

VA PO RU SA