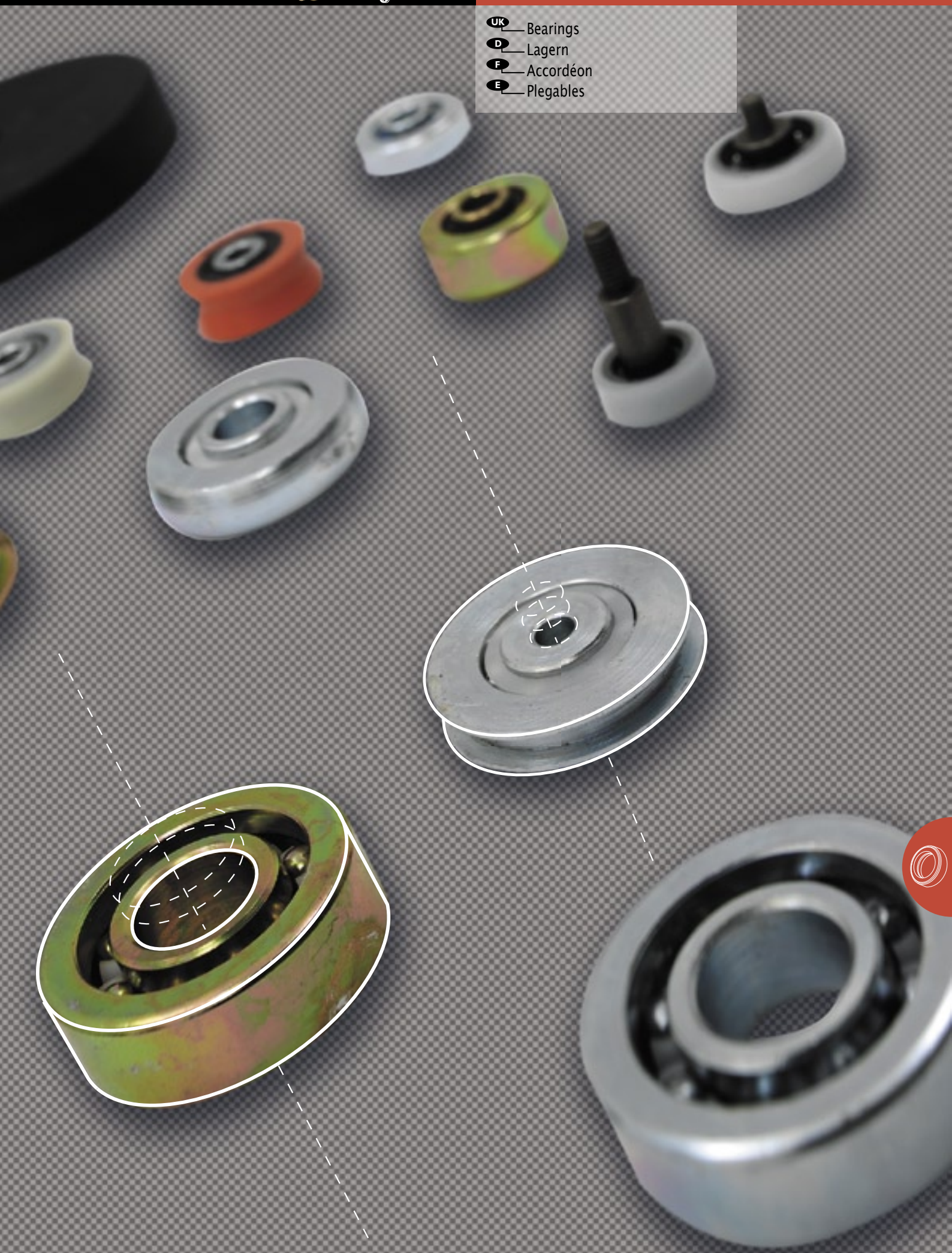
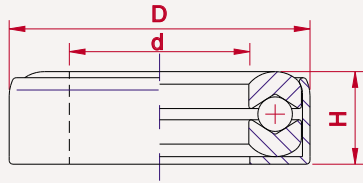


- UK** — Bearings
- D** — Lagern
- F** — Accordéon
- E** — Plegables



- I** Cuscinetti reggispira stampati e cementati
- UK** Pressed and case - hardened thrust bearings
- D** Drucklager gestanz und gepresst
- F** Roulement de butée
- E** Cojinetes de empuje estampados y cementados

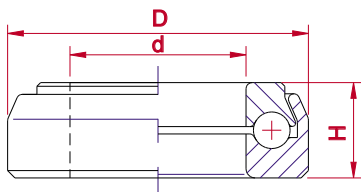


- I**
 - Z** = ZINCATO
 - T** = TROPICALIZZATO
 - N** = ZINCATO NERO
- UK**
 - Z** = GALVANISED
 - T** = YELLOW GALVANISED
 - N** = BLACK GALVANISED
- F**
 - Z** = ZINGUE'
 - T** = GALVANISE'
 - N** = GALVANISE' NOIR
- D**
 - Z** = VERZINKT
 - T** = GELB VERZINKT
 - N** = SCHWARZ VERZINKT
- E**
 - Z** = ZINCADO BLANCO
 - T** = ZINCADO AMARILLO
 - N** = ZINCADO NEGRO

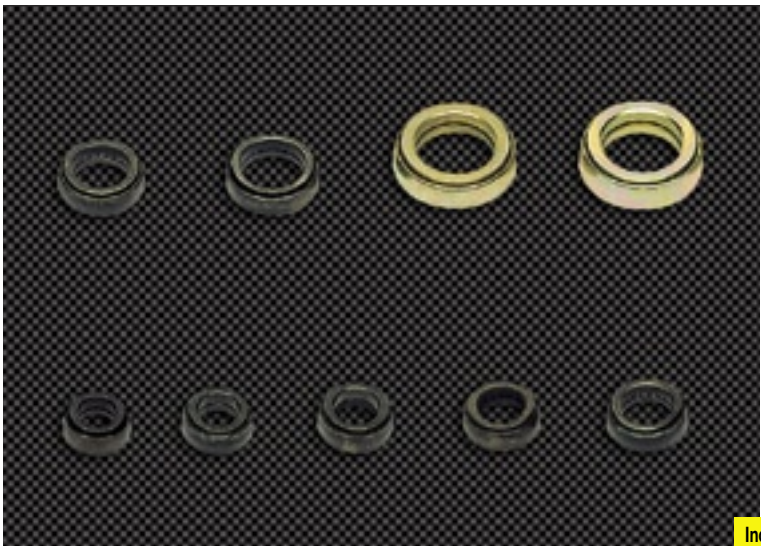


ARTICOLO-ARTICLE	d	D	H		Z	T	N		€	
Riferimento-Reference	Ø	mm	N°						X1	
1	O...06 12 S5	6	12,5	5,5	50	0,14	Z	T	/	
2	O...07 13 S5	7	13	5,5	50	0,15	Z	T	/	
3	O...07 15 S6	7	15	6,5	50	0,25	Z	T	/	
4	O...08 16 S7	8	16,5	7	50	0,32	Z	T	/	
5	O...08 17 S7	8,5	17,5	7,5	50	0,35	Z	T	/	
6	O...09 15 S5	9	15	5,5	50	0,18	Z	T	/	
7	O...10 17 S6	10	17,5	6	50	0,27	Z	T	/	
8	O...11 19 S6	11	19	6,5	50	0,33	Z	T	/	
9	O...12 20 S6	12	20	6,5	50	0,36	Z	T	/	
10	O...13 21 S6	13	21	6,5	50	0,40	Z	T	/	
11	O...14 22 S7	14	22	7	50	0,40	Z	T	N	
12	O...16 27 S6	16	27	6,5	50	0,56	Z	T	N	
13	O...20 29 S6	20	29	6,5	50	0,60	Z	T	N	

- I** Cuscinetti reggispira torniti e cementati
- UK** Pressed and case - hardened thrust bearings
- D** Drucklager gestanz und gepresst
- F** Roulement de butée
- E** Cojinetes de empuje torneados y cementados



- I**
 - Z** = ZINCATO
 - T** = TROPICALIZZATO
 - N** = ZINCATO NERO
- UK**
 - Z** = GALVANISED
 - T** = YELLOW GALVANISED
 - N** = BLACK GALVANISED
- F**
 - Z** = ZINGUE'
 - T** = GALVANISE'
 - N** = GALVANISE' NOIR
- D**
 - Z** = VERZINKT
 - T** = GELB VERZINKT
 - N** = SCHWARZ VERZINKT
- E**
 - Z** = ZINCADO BLANCO
 - T** = ZINCADO AMARILLO
 - N** = ZINCADO NEGRO



ARTICOLO-ARTICLE	d	D	H		Z	T	N		€	
Riferimento-Reference	Ø	mm	N°						X1	
14	O...09 17 T7	9	17	7	50	0,34	Z	/	N	
15	O...10 18 T7	10	18	7	50	0,37	Z	/	N	
16	O...11 19 T7	11	19	7	50	0,40	Z	/	N	
17	O...12 20 T7	12	20	7	50	0,41	Z	/	N	
18	O...13 21 T7	13	21	7	50	0,44	Z	/	N	
19	O...14 22 T7	14	22	7	50	0,47	Z	T	N	
20	O...16 24 T7	16	24	7	50	0,51	Z	T	N	
21	O...30 32 T8	20	32	8	50	1,17	Z	T	N	
22	O...20 32 T9	20	32	9	50	1,33	Z	T	N	
23	O...25 43 T1	25	43	12	50	3,5	/	T	/	
24	O...20 32 87	20	32	8,75	50	1,33	/	/	N	
25	O...17 30 T9	17	30	9	50	1,15	Z	T	N	
26	O...25 40 T1	25	40	10	50	3,5	/	T	/	
Inox 221	OI 20 32 T9	20	32	9	50	1,33	/	/	/	